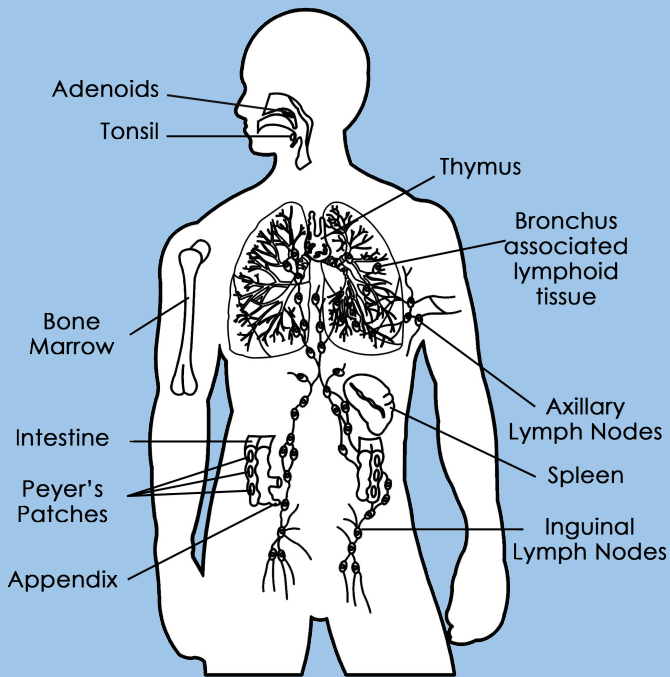




The Immune System



What is the Immune System?

- The defense system of the body which fights against foreign substances or antigens
- Must be able to distinguish between self and non-self molecules

Two types of immunity

Innate Immunity

- "Inborn" or present from birth.
- Non-specific immunity
- Natural Killer Cells
- Phagocytes
- Skin, Mucous membrane

Adaptive Immune System

- Acquired or programmed immunity.
- Specific Immunity
- Lymphocytes (T cells, B cells)
- Antibody production

The Lymphatic System

- Drains interstitial fluid, fluid that is left over in the tissues after the capillaries deposit nutrients and oxygen.
- One way system (brings extra fluid from the tissues back to the heart).

Primary Lymphatic Organs

- Where B cells and T cells become immunocompetent
- Thymus
- Red bone marrow

Secondary Lymphatic Organs

- Where most immune responses occur
- Lymph nodes, Tonsils
- Spleen, Mucous membranes

